



Plum Tree Island National Wildlife Refuge, VA

U.S. ARMY CORPS OF ENGINEERS
FACT SHEET as of January 6, 2021

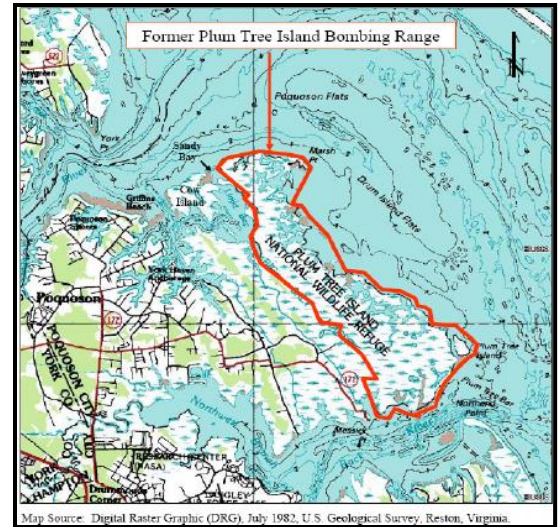
BUILDING STRONG®

AUTHORIZATION: Defense Environmental Restoration Program

TYPE OF PROJECT: Formerly Used Defense Site (FUDS)

CONGRESSIONAL INTEREST: Senators **Kaine** and **Warner (VA)** and Representative **Luria (VA-02)**

BACKGROUND: Plum Tree Island National Wildlife Refuge was formerly known as the Plum Tree Island Range and used for aerial bombing and gunnery practice from 1917 through the late 1950s. The former bombing range consisting of approximately 3,000 acres was transferred to the U.S. Fish and Wildlife Service (USFWS) in 1972.

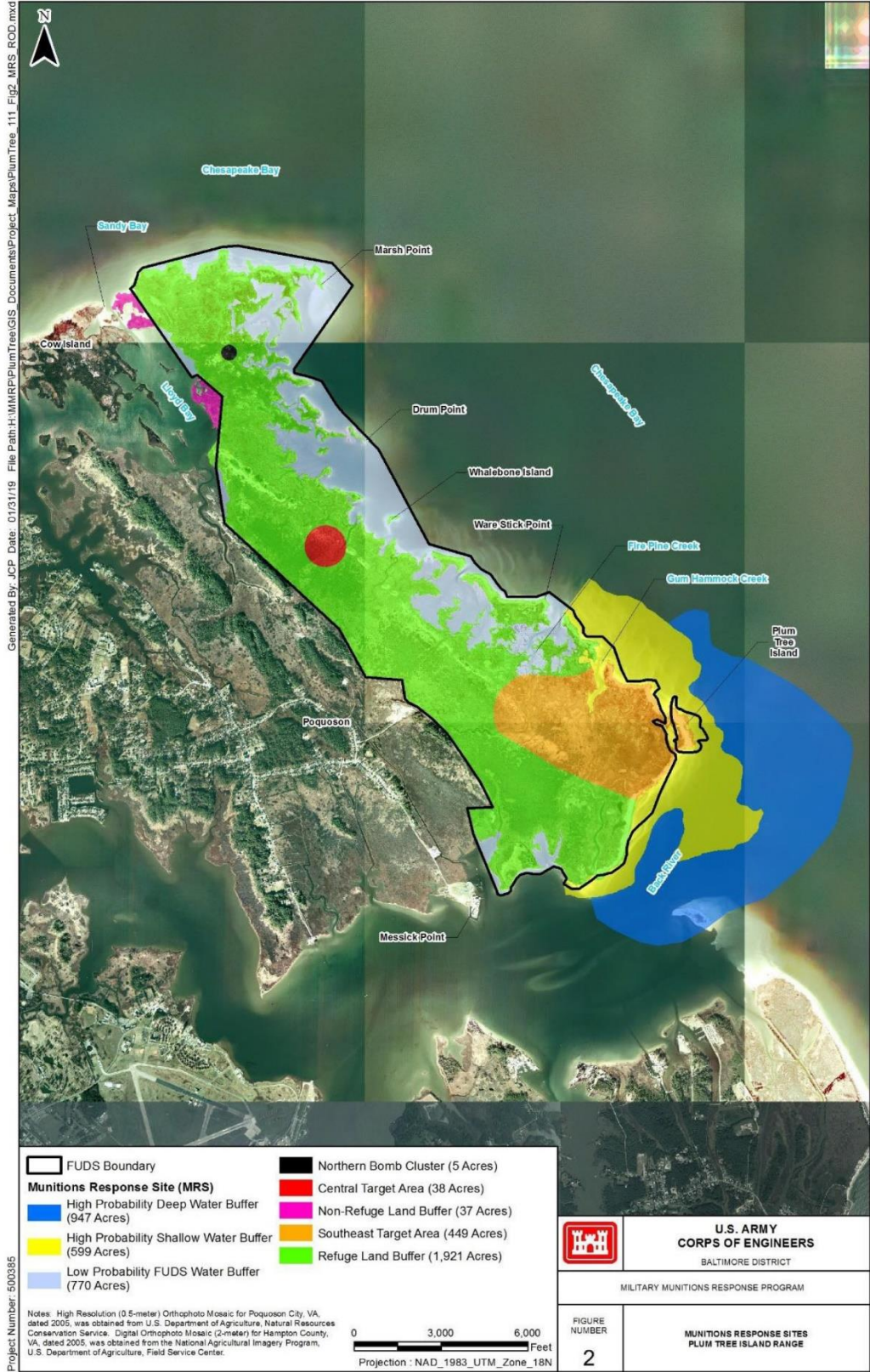


The entire refuge remains closed to all public use due to the potential for encountering unexploded ordnance (UXO). Known extensive usage of the southern portion of the Refuge for bombing and the presence of UXO along the shoreline prompted the U.S. Army Corps of Engineers (USACE) to establish a Danger Zone in the shallow water along the southern half of the Refuge. This Danger Zone is marked by warning signs, and disturbance of the channel bottom is prohibited.

A revised Feasibility Study (FS), FS Addendum and Proposed Plan (PP) were completed and approved in 2018. The PP outlined the various remedy approaches for the various former ranges at the site. The public comment period for the PP was completed in August 2018. Public meetings were held in July 2018.

STATUS: A Decision Document was approved by USACE HQ in September 2019. The DD specifies selected final remedies and outlines long-term land-use controls for the eight former range areas at the site. Remedial Design is underway, including coordinating for safety education and outreach with USFWS, designing land-use controls and assessing potential approaches for UXO removal that may minimize environmental disturbance at the site.

For more information contact Brent Graybill, (410) 962-4258, e-mail Brent.M.Graybill@usace.army.mil.



U.S. ARMY CORPS OF ENGINEERS – BALTIMORE DISTRICT
2 Hopkins Plaza, Baltimore, MD 21201

<https://www.nab.usace.army.mil>